

Felka Midi P

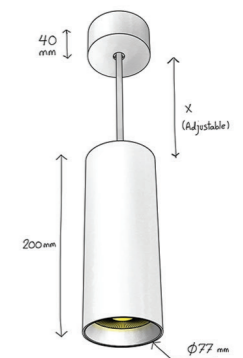
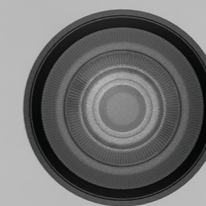
Pendant Mounted



Specific design of the bottom frame with it's strips reduce the direct view to the light point and of course glare

Felka Midi P

Pendant Mounted



CODE	F326
Light source	LED
Power (W)	20
luminous flux (lm)	2200
Color Rendering (Ra)	>80
Color Temperature (K)	3000 4000*
Body Color	White Black

*Customized body colors and other color temperatures (CCTs) are available upon request



1.0 kg



20 x 16 x 12 cm



Supply Voltage:

220-240 Vac, 50Hz

Driver:

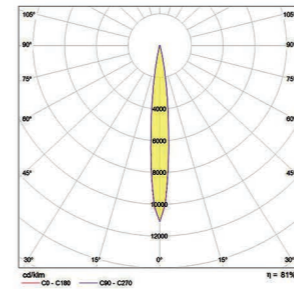
DALI | Dimmable version available upon request

Recommended Applications:

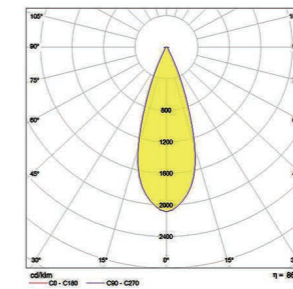
Residential | Office | Shop

Felka Midi P

Light distributions



Spot(S)



Medium(M)



Order code table

Body Color	3000K	Beam Angle	4000K	Body Color
White	F326W2030S	Spot	F136W1240S	White
	F326W2030M	Medium	F326W2040M	

Body Color	3000K	Beam Angle	4000K	Body Color
Black	F326B2030S	Spot	F326B2040S	Black
	F326B2030M	Medium	F326B2040M	