

**Fenos<sup>®</sup>**

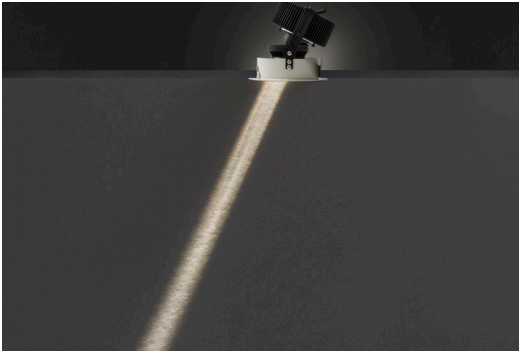
The Light Idea



## **Nian XS**

An Extreme Narrow Spot  
For Delightful Indoor Atmosphere

## Nian XS



Accent lighting is one of the key elements in architectural lighting design. Spot lighting on objects, attracts people's attention to that object, and creates the feeling of drama in the space.

We as human being like shadows. A completely uniform lit environment resembles a cloudy day for us. The extreme narrow beam of Nian XS family, generated by a sophisticated high tech optic and a powerful compact light source is a good solution.

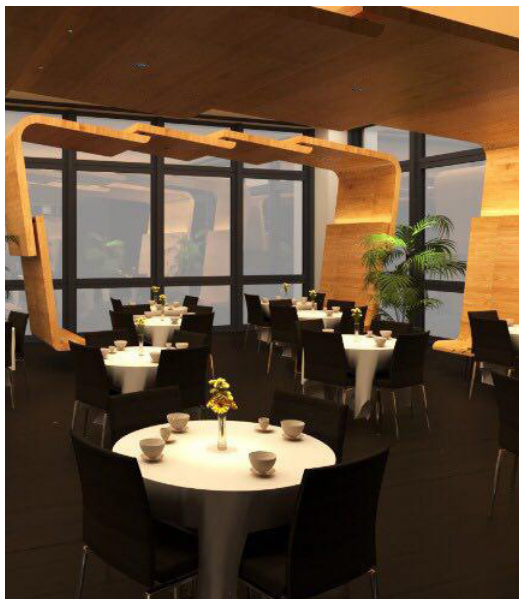
In retail environment, increase level of contrast between light and dark spaces, gives a feeling of more luxury and special feeling to the customer.



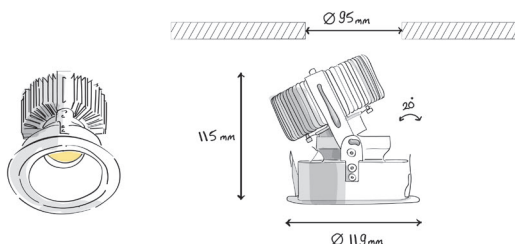
Secondary reflector helps to reduce the glare and make the downlight to appear like a real "Dark light". This draws the attention from "where the light comes from" to the illuminated object.



Studies show that in office environments, accent lighting on certain objects increases the sense of well being.



The ceiling height in your shop is almost 5 meters and you have a small object which you want to highlight? That's very easy with Nian XS. Due to extremely narrow beam light, a circle with diameter of only 65 cm illuminated even from a distance of 4 meters between the light source and show case.



Order CODE	Power (W)	Luminous flux (lm)	CRI (Ra)	CCT (K)	Body Color
F130W-B930XS	9	750	>80	3000	White-Black
F130W-B940XS	9	800	>80	4000	White-Black

\* Customized body color and other color temperatures are also available upon request